

## Bifluorid 10

### THE PARTNERS

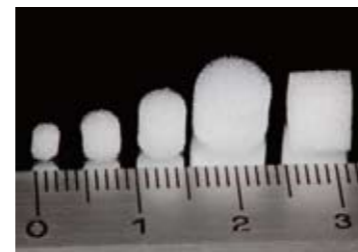
#### Indications

Treatment and prevention of all hypersensitivities, for example:

- cervical areas and crown margins
- sealing cavity margins after restoration, especially if the etching technique is employed
- after professional cleaning and calculus removal
- as dentine protection or lining under amalgam fillings
- before whitening therapy
- tooth surfaces after preparation and/or grinding
- worn occlusal surfaces and teeth carrying clasps
- after injury of the enamel (fractures, chips)

#### Advantages

- unique combination of sodium and calcium fluoride
- high fluoride release for effective fluoridation
- pH-neutral, remains on the tooth surface for a long period of time
- compatible with whitening, reduces sensitivities without interfering with the whitening treatment
- also available in practical *SingleDose*
  - easy, quick and hygienic application
  - can be used without additional holders
  - no spilling in any position



#### Presentation

##### Bifluorid 10

- REF 1615 Set 4 g and solvent  
 REF 1316 Bottle 10 g  
 REF 1316 Bulk set 3 x 10 g Bifluorid 10, solvent and Pele Tim

##### Bifluorid 10 *SingleDose*

- REF 1618 50 *SingleDose*, accessories  
 REF 1619 200 *SingleDose*, accessories

##### Pele Tim

- REF 2250 Nr. 0, mini, ø 3 mm, ca. 3,000 pieces  
 REF 2252 Nr. 1, small, ø 4 mm, ca. 3,000 pieces  
 REF 2253 Nr. 2, medium, ø 5 mm, ca. 1,000 pieces  
 REF 2254 Nr. 3, large, ø 8 mm, ca. 500 pieces  
 REF 2255 Nr. 4, wedge-shaped, 6 x 8 mm, ca. 500 pieces

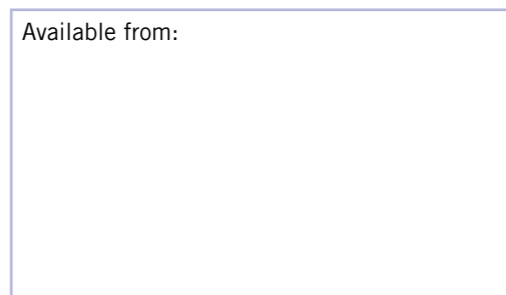


VOCO GmbH  
 P.O. Box 767  
 27457 Cuxhaven  
 Germany

Phone: +49 (0) 4721-719-0  
 Fax: +49 (0) 4721-719-109

info@voco.com  
 www.voco.com

Available from:



## Bifluorid 10

FOR THE TREATMENT OF  
 HYPERSENSITIVITY AND FOR FLUORIDATION

## Bifluorid 10

### THE COMBINATION OF SODIUM AND CALCIUM FLUORIDE

#### A broad range of applications for a fluoride varnish

You can encounter many causes of your patients' dentine hypersensitivities during your daily work. Amongst other conditions, dentine hypersensitivities can be caused by:

- exposed cervical areas
- exposed dentine after periodontal therapy and with local gingival recession
- abrasion
- severe enamel abrasion in the area of clasps and premature contact
- hypersensitivity after professional tooth cleaning

Bifluorid 10 is the ideal preparation to effectively alleviate these complaints. Bifluorid 10 is ideally suited for accelerated remineralisation and fluoridation of tooth substance. Bifluorid 10 also prevents secondary caries after restoration, especially after employment of the etching technique.

#### Efficient, well-tolerated, quick

Bifluorid 10 features a varnish base made from natural materials and the unique combination of 5% sodium fluoride (equal to 22,600 ppm fluoride) and 5% calcium fluoride. The special combination of the two fluoride salts permits both an immediate high release of fluoride (through NaF) and long-term fluoridation (through CaF<sub>2</sub>). The easily soluble sodium fluoride provides the quick release of fluoride ions, that are converted to calcium fluoride on the tooth surface to effectively support remineralisation. The antisoluble calcium fluoride contained in the varnish provides for lasting retention on the tooth surface. This ensures long-term fluoridation. The coactions of the two fluorides through the formation of calcium fluoride depots facilitate long-term conversion of hydroxyl apatite into fluorapatite. Damaged enamel surfaces are thus effectively protected.

The excellent compatibility of Bifluorid 10 has been proven innumerable times around the world. This is due to not only the use of natural ingredients, but also to a composition free from methacrylate and glutaraldehyde.

Bifluorid 10 adheres especially well to enamel and dentine and dries quickly, thanks to its coordinated composition. The treated tooth is immediately protected against harmful external influences. The dentinal tubules are effectively sealed through the precipitation of calcium fluoride. Sustained protection against chemical, thermal and mechanical stimuli is the result your patients will notice immediately.

The treated teeth are not discoloured by the thinly applied, transparent varnish. The aesthetics are not affected. Bifluorid 10 remains on the treated surfaces for an extended period of time with proper application and positive compliance from the patients. The varnish adheres especially well to enamel for a long time, particularly in vulnerable places such as approximal areas and fissures. Bifluorid 10 is economical to use and permits up to 300 applications from the 4 g bottle.



Fluoridation with Bifluorid 10 after a professional cleaning



## Bifluorid 10

### INDICATIONS FOR BIFLUORID 10

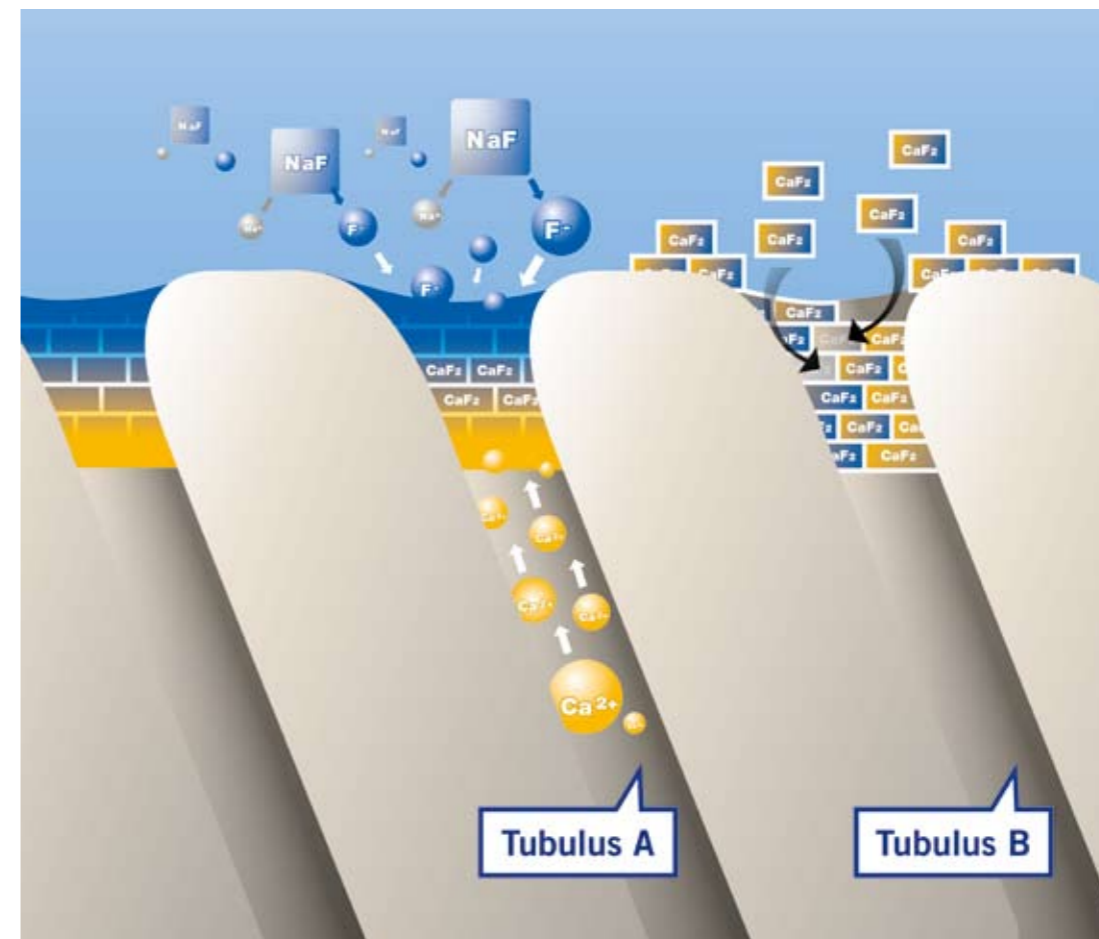
#### Bifluorid 10 – the ideal addition to whitening

The professional whitening of teeth in the dental surgery is becoming increasingly prevalent. Sensitivities triggered by the whitening process are often an undesirable side effect. With Bifluorid 10, the occurrence of sensitivities can effectively be prevented, even before beginning the whitening treatment. Bifluorid 10 can be used during the entire whitening treatment without impairing the whitening effect.

#### Optimal protection after professional tooth cleaning

Professional tooth cleaning is a firmly established component of dentistry. An important work step in this procedure is polishing the teeth. The enamel cuticle is removed in the process, which leaves the tooth accordingly vulnerable. Bifluorid 10, applied after polishing, immediately protects the tooth and replaces the natural fluoride compounds on its surface.

#### Mode of action of the sodium and calcium fluoride contained in Bifluorid 10



Tubulus A:  
Formation of calcium fluoride by the reaction of the sodium fluoride contained in Bifluorid 10 with calcium ions contained in the saliva and dentinal tubuli liquid

Tubulus B:  
Storage of the calcium fluoride contained in Bifluorid 10 in the tooth substance and tubuli