

# Futurabond DC

THE CHOICE IS YOURS

## Indications

Direct self- or dual-curing composite restorations and core build-ups

Direct light-curing restoration with composite-, compomer- and Ormocer®-based restoratives

Adhesive luting of root pins/posts with dual or self-curing composite cements

Indirect restoration when using dual- and self-curing resin cements for luting of inlays, onlays, crowns and bridges

## SingleDose Advantages

- Only 35 s application time
- One-step blister activation
- Simple, fast and hygienic

## Advantages

- Can be used with all light-, dual- and self-curing composites
- Perfect for cementing root pins and posts
- High dentine shear bonding strength
- Permanently tight margins
- Moisture-tolerant
- Contains fluorides
- Reduces post-operative sensitivity
- Nano reinforced
- No shaking required
- “All-in-One“ universal adhesive



## Presentation

REF 1163 bottle 4 ml liquid 1 / bottle 4 ml liquid 2, accessories

REF 1164 50 *SingleDose*, accessories

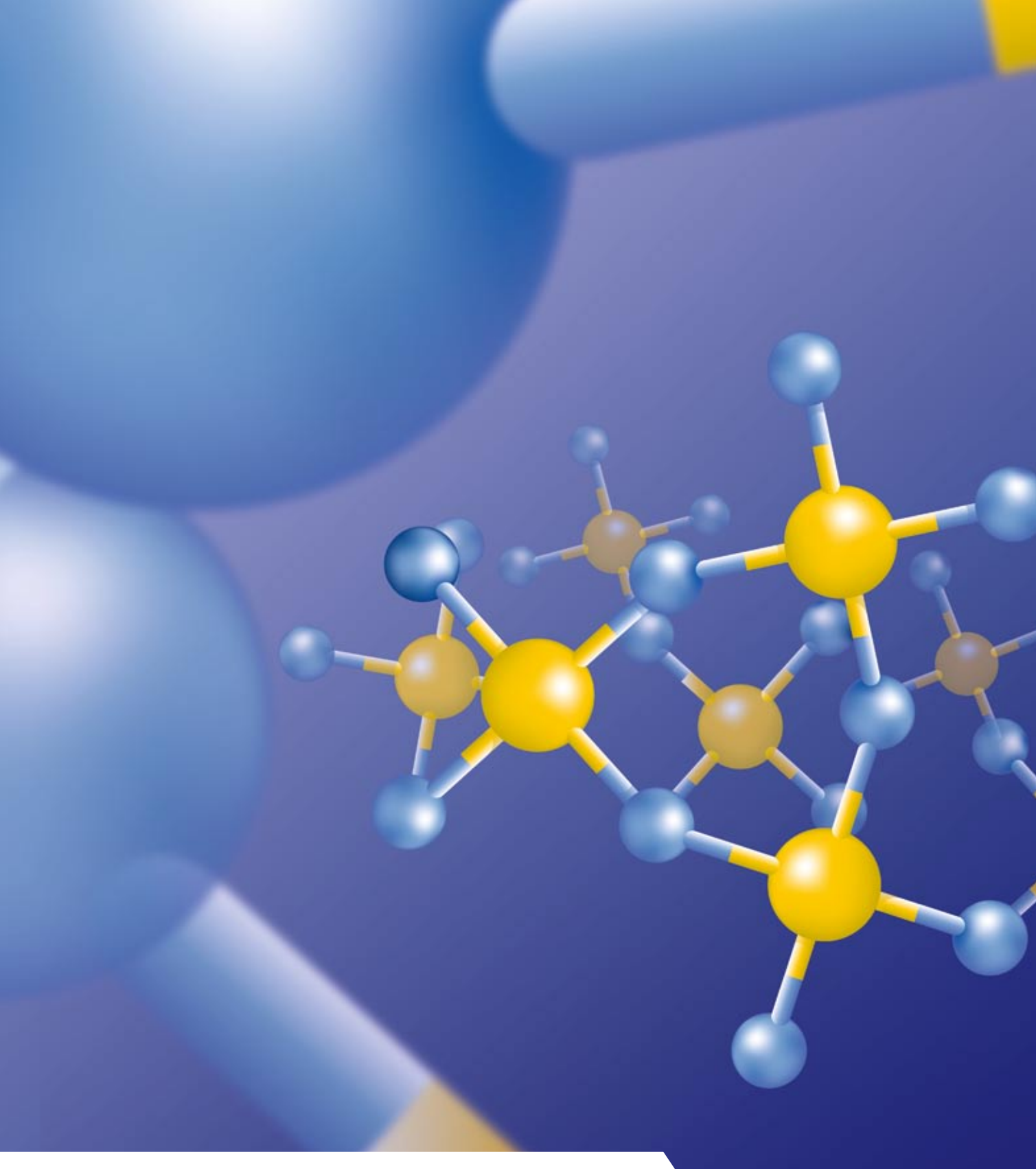
REF 1165 200 *SingleDose*, accessories

VOCO GmbH  
P.O. Box 767  
27457 Cuxhaven  
Germany

Tel.: +49 (0) 4721-719-0  
Fax: +49 (0) 4721-719-140

info@voco.com  
www.voco.com

Available from:



# Futurabond DC

DUAL-CURING SELF-ETCH-BOND  
WITH NANO-FILLERS

# Futurabond DC

**DUAL. UNIVERSAL. SAFE.**

## The bond for all cases

Futurabond DC is ideal for creating a strong, durable bond under all light-, self- and dual-curing restoratives.

Futurabond DC fulfills the requirements for patient-oriented therapies and is suited for a wide range of indications including: composite fillings, inlays, onlays, crowns, bridges and posts. Bond strength, a tight marginal seal as well as fast, precise and simple application are merged to create a bond that is always the right choice. The total performance of Futurabond DC is designed to exceed the expectations of both the practitioner and the patient.

For indirect restorations, Futurabond DC can be used with all dual- and self-curing luting systems without prior polymerization of the adhesive layer. This is often a deciding factor when working in areas that are difficult to reach with a light.

## One coat – secure bond

The highly functionalized SiO<sub>2</sub> particles (Ø 20 nm) in Futurabond DC facilitate a cross-link of the bonding's resin

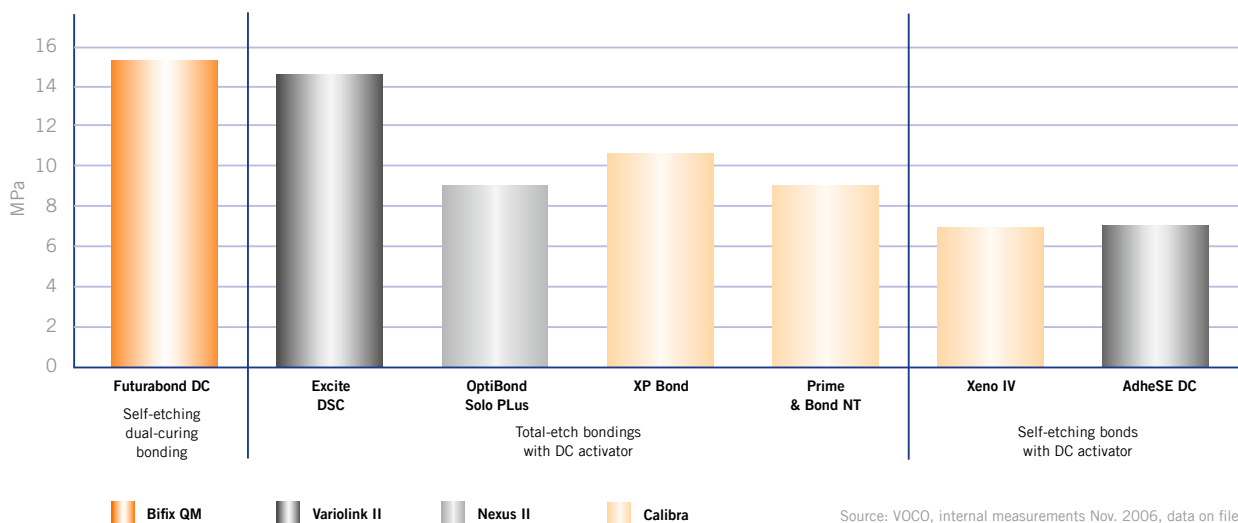
components and enhance its filmbuilding properties. Thus, the adhesive can optimally wet the exposed collagen fibers and micro-retentive etching pattern on the enamel. This optimizes cross-linking density and wetting properties as well as reinforces the adhesive layer.

A one-coat application of the bond is sufficient to guarantee a permanently stable bond of the composite to the tooth.

## Dual-curing + Self-etching

- Adhesive bonding of indirect restorations
- Adhesive bonding of root pins and posts
- Adhesive core build-up
- Dentine is perfectly etched
- Dentine is perfectly dried
- No contamination of etching pattern

## Bond strength of adhesives to dentin with corresponding resin cement in self cured mode



\*Xeno III, Xeno IV, Prompt L Pop, One-Up Bond F, Clearfil SE, Variolink II, Nexus II, Calibra, Protect Bond, AdheSE DC, Excite DSC, Optibond Solo Plus, XP Bond, Prime&Bond NT, G-Bond and iBond are not registered trademarks of VOCO GmbH.

# Futurabond DC

SIMPLE APPLICATION IN ONLY 35 SECONDS

## Direct restoration

1

2

3

4

5

20 Sek.

5 Sek.

10 Sek.

10 Sek.

10 Sek.

**SIMPLY PRESS!  
SIMPLY BOND!**

3 x

## Indirect restoration

Cementation

4

5

5 Sek.

10 Sek.

Instructions DC Cement

DC Cement Instructions

VOCO

Posts

4

5